

Emi Zanelli  
Portfolio 2020

Tulane School of Architecture 2021

# Table of Contents

I Mat Housing Complex

II . The Horizontal House

III . The Vertical Houses

IV . Boundaries and Thresholds

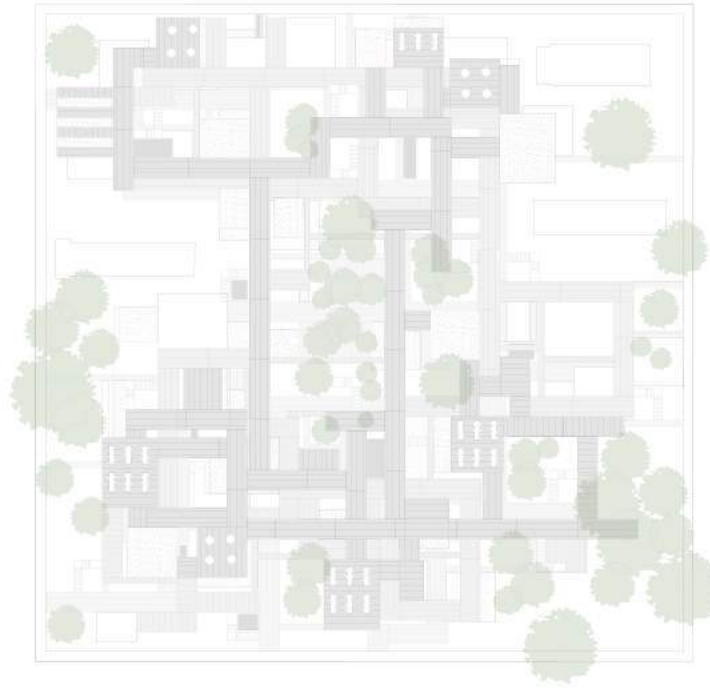
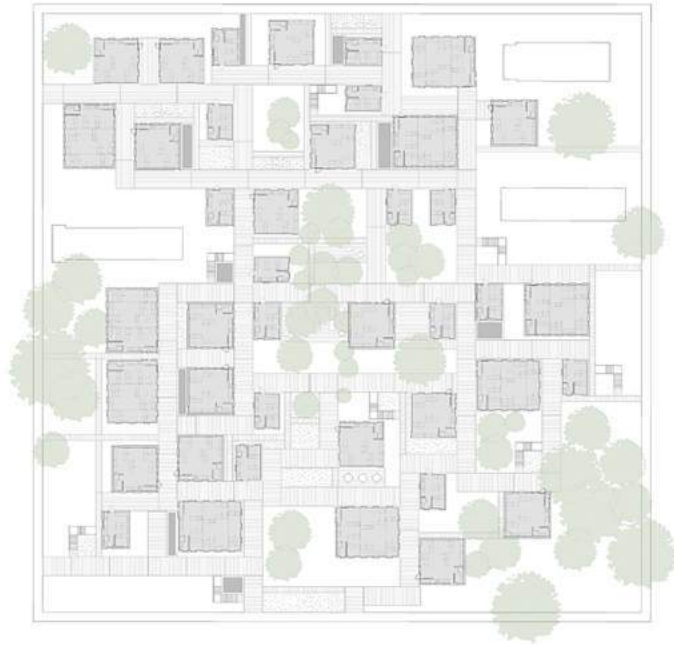
V . Toronto Community Center

VI . Lafitte Greenway Analysis

VII. Strawberry Vale Analysis

VIII . Gansu, China

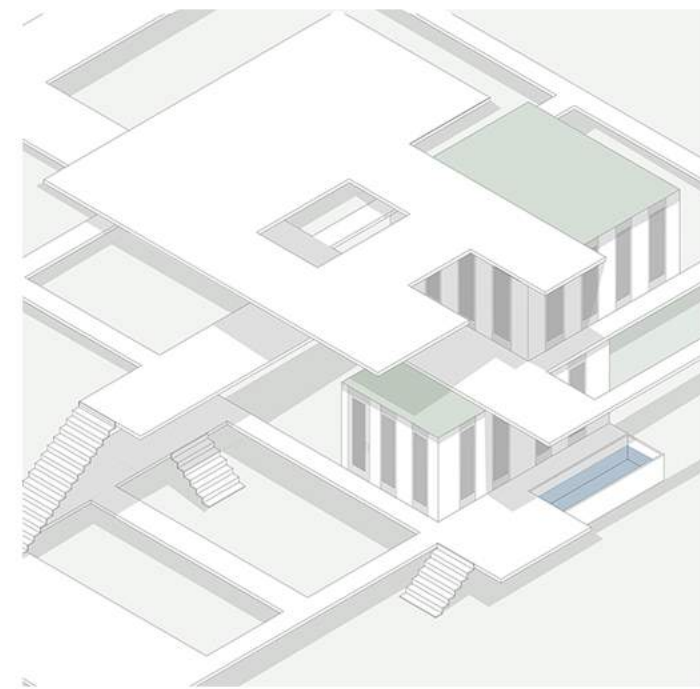




## The Mat Housing Complex

The goal of the Mat Housing Complex is to integrate compact, replicable homes of various sizes in a repetitive manner into one (or multiple) blocks of uptown New Orleans. The two layers of stacking create numerous garden and community spaces on the roofs of one another. Additionally, the block formation is, and can be, altered based on existing trees, historic buildings, and accommodation of neighbors.



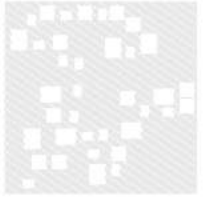
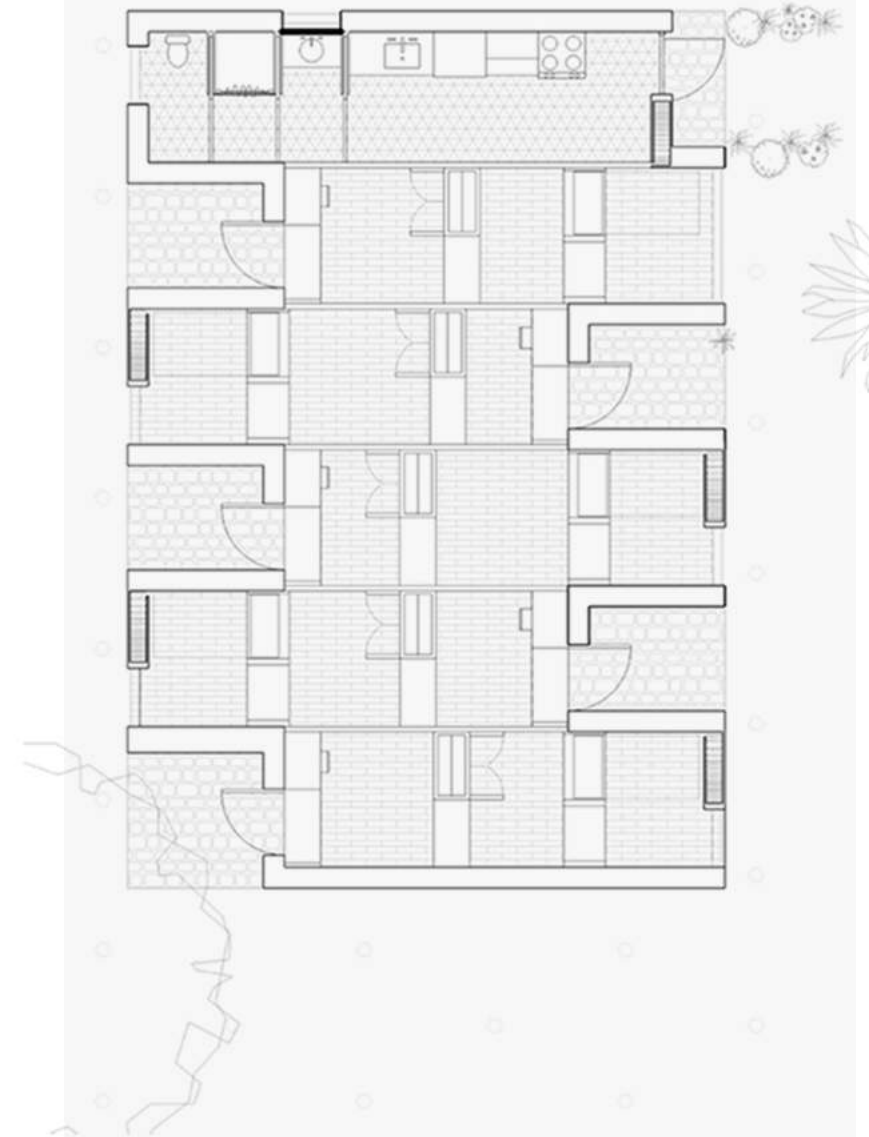
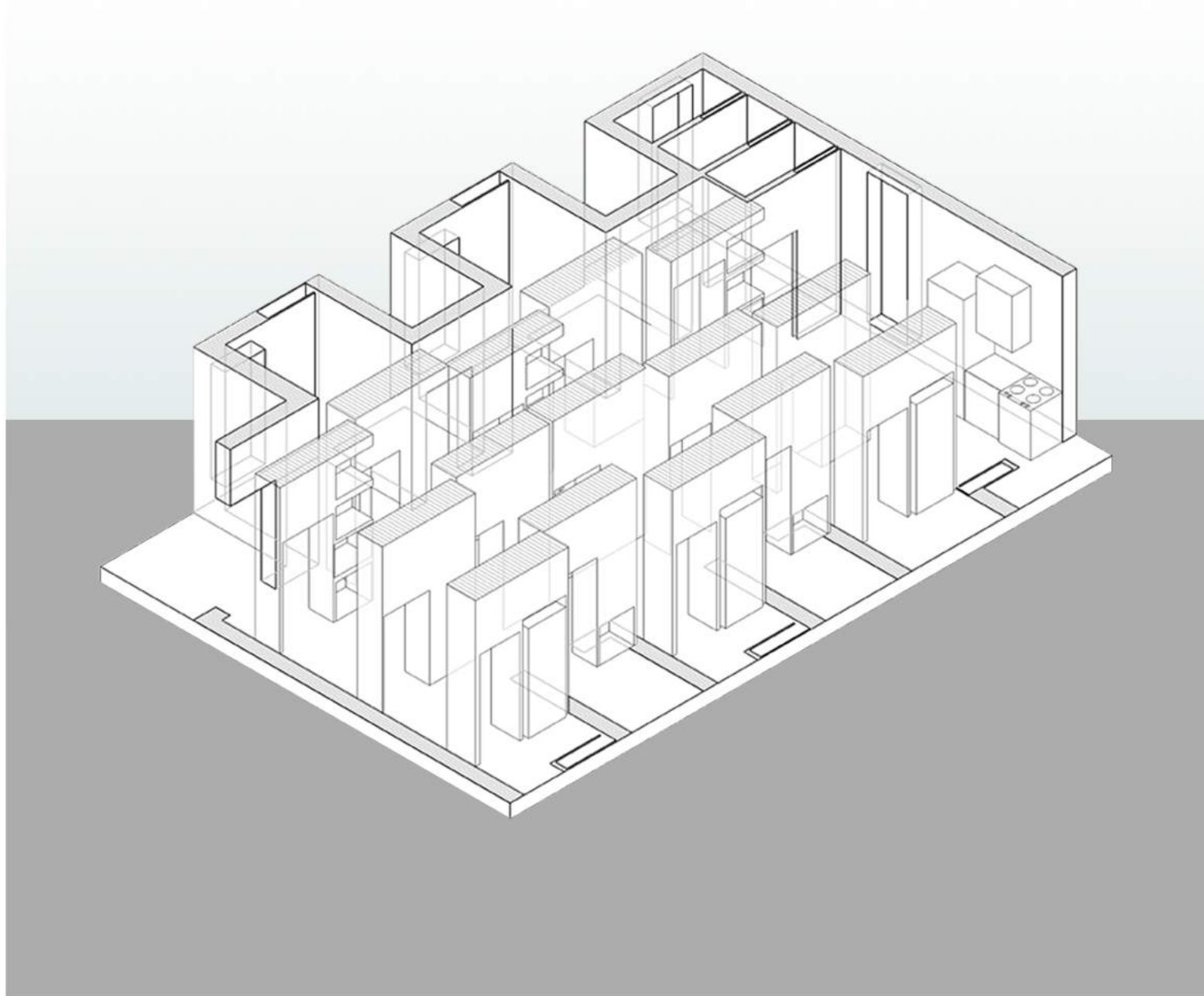


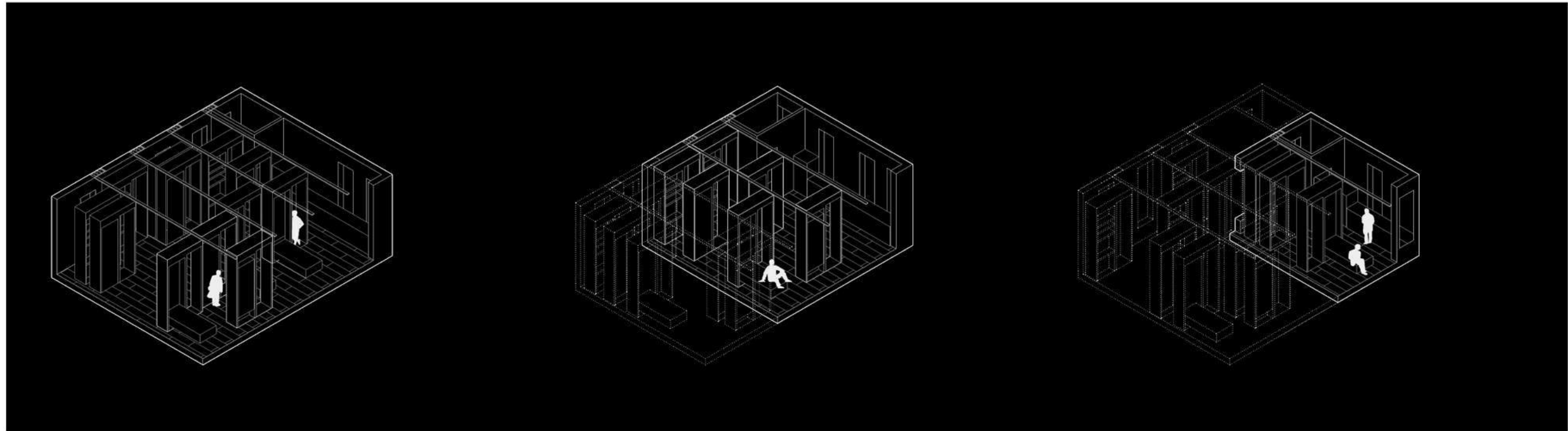
## The Mat Housing Complex

The mat housing complex takes its housing modules from a previous project, The Horizontal House. By connecting the houses via catwalk and deck-like structures, neighbors are better able to interact and develop a meaningful environment. Furthermore, the raised buildings, iron railings, and vertical holes windows on a square building all pay homage and reap the benefits of the area's vernacular architecture.



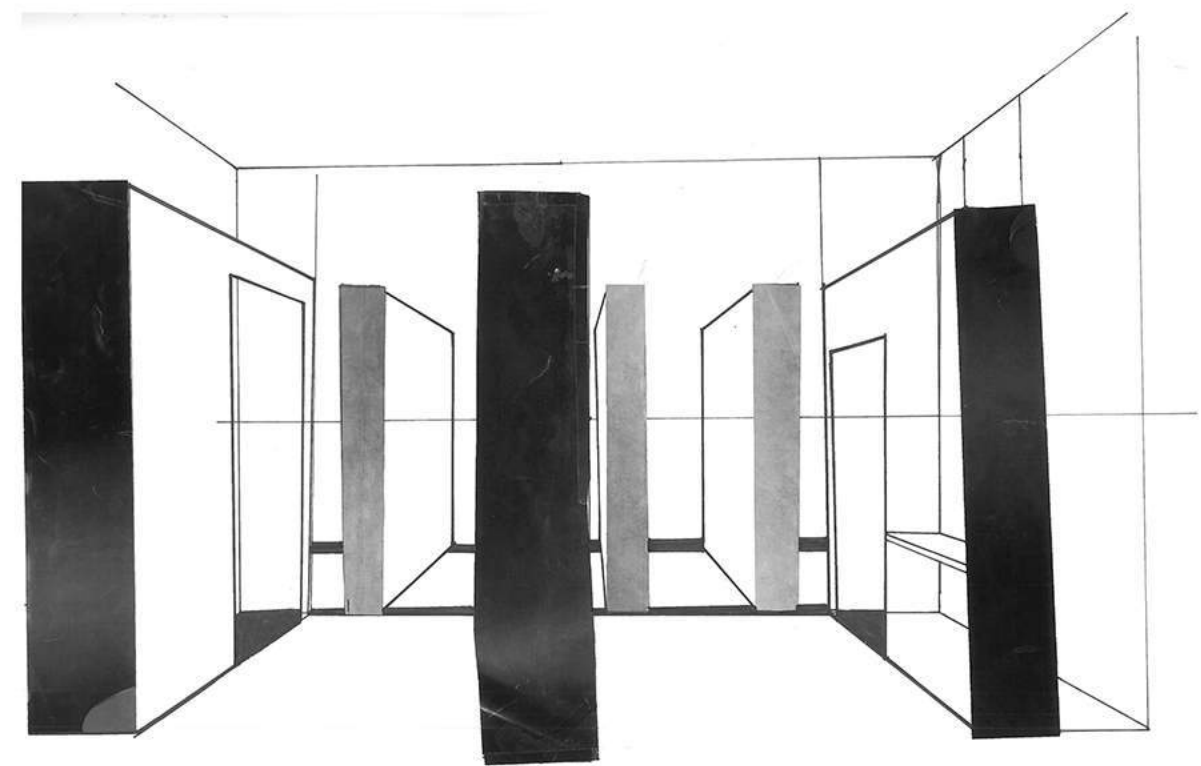
# The Horizontal House





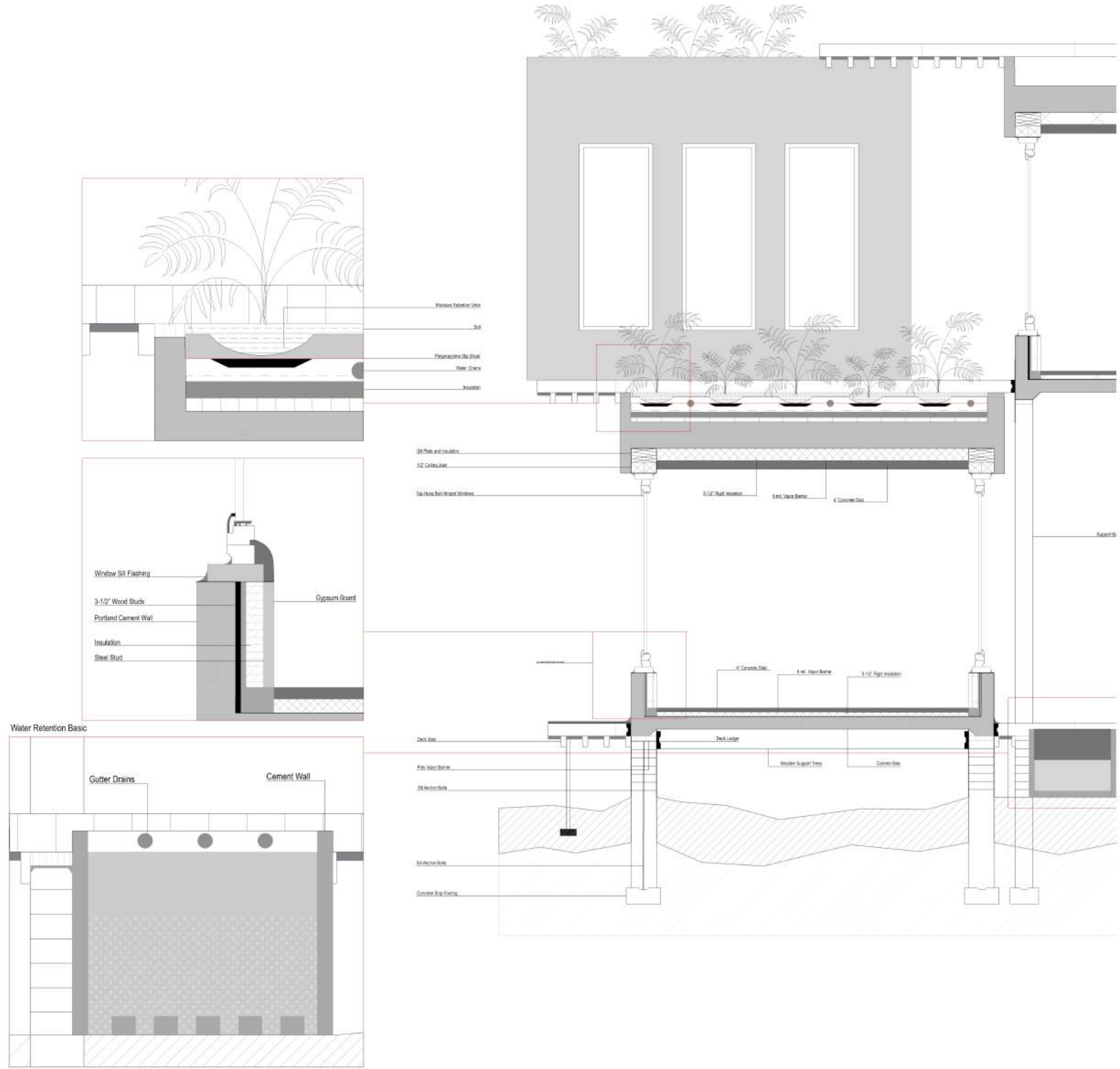
## The Horizontal House as Prefabricated Units

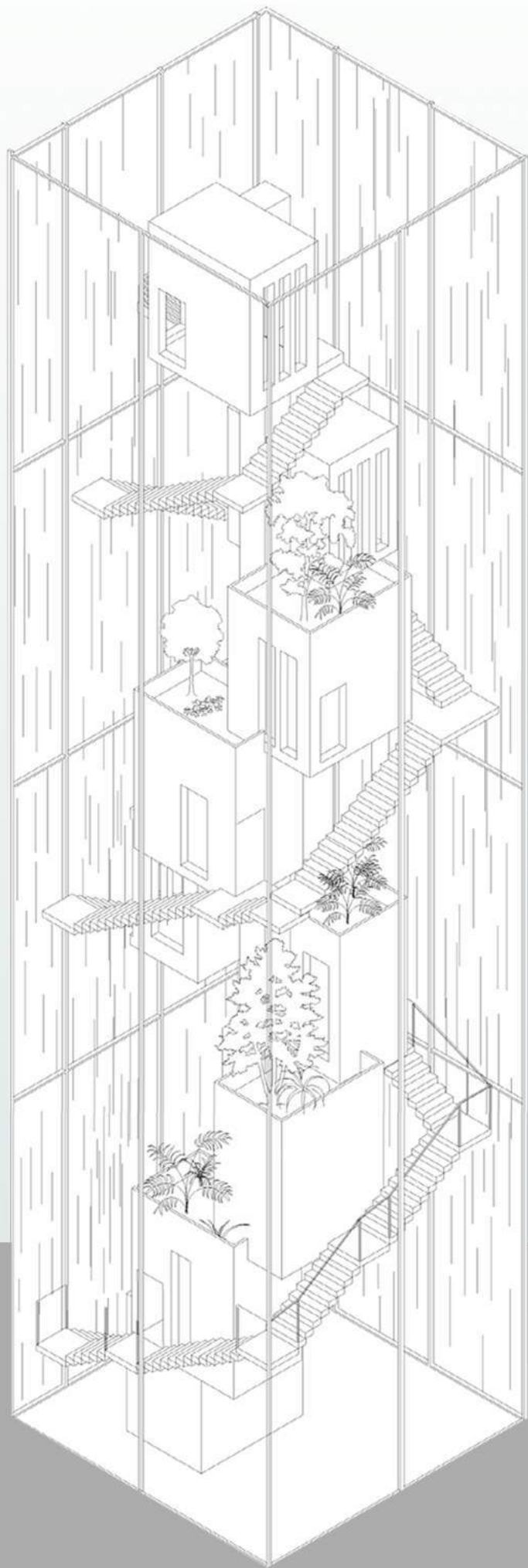
The horizontal house can exist in a one, two, or four person unit. It is defined by its stripe-like design and movement of numerous preinstalled furniture pieces. The pieces serve as desks, wardrobes, and beds and can be moved along its rail and one can move through the piece. The movement formed by this design is amplified by the linear movement of flexible walls and alternating private outdoor space.



# Wall Section Detail

Wall Section showing the flood prevention and climate considerate measures implemented in The Mat Housing Project.



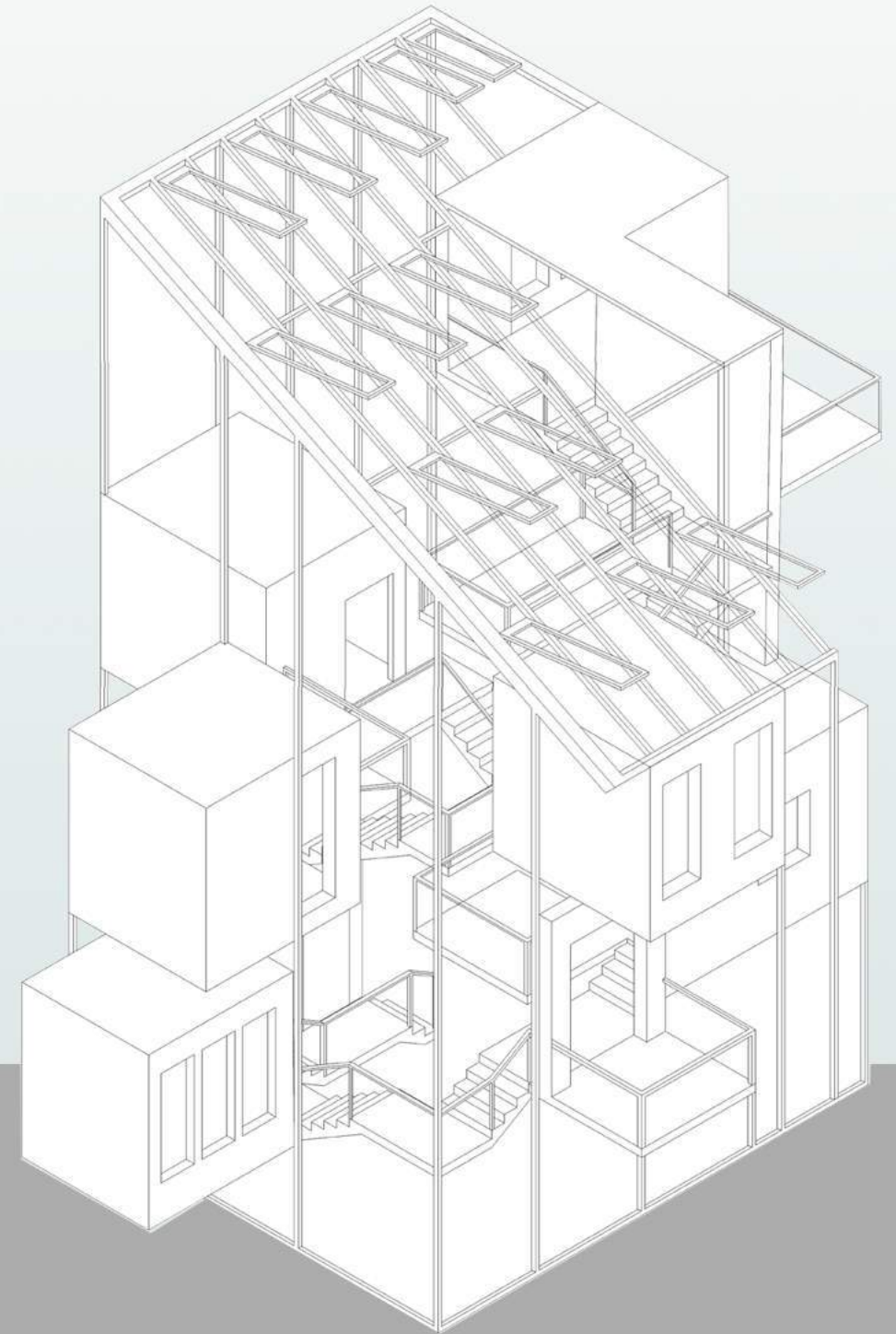


T  
h  
e  
  
V  
e  
r  
i  
c  
a  
l  
  
H  
o  
u  
s  
e

The Mushroom and Vertical Houses are designed based on rigid parameters dictating their spatial capacity and elongated nature. The designs are limited by a minimal footprint and emphasize a perpendicular quality.

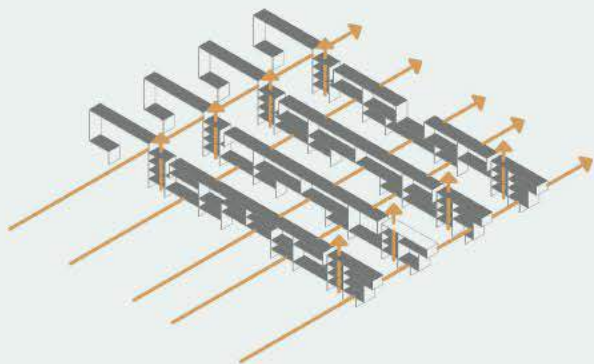
Movement through the buildings consists of a spiraling thrust, extruding the occupant while maintaining a relationship with the outer context.

T  
h  
e  
  
M  
u  
s  
h  
r  
o  
o  
m  
  
H  
o  
u  
s  
e



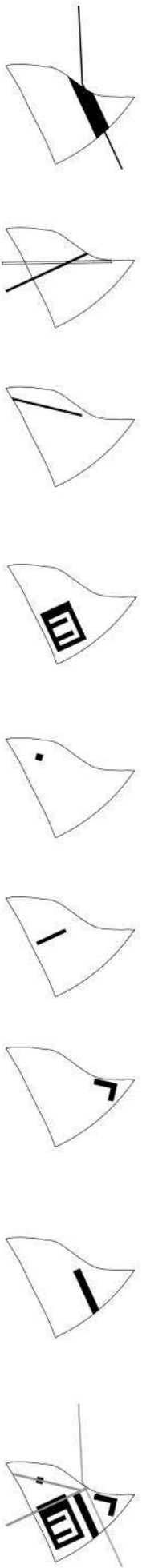


# Boundaries and thresholds



The goal of this project is to create an urban landscape in the heart of Toronto. To accomplish this, the integration and revitalization of existing roads is used as a method to organize the site.

The second component is the insertion of a housing block, viewing tower, office complex, and a train station + community marketplace and plaza.

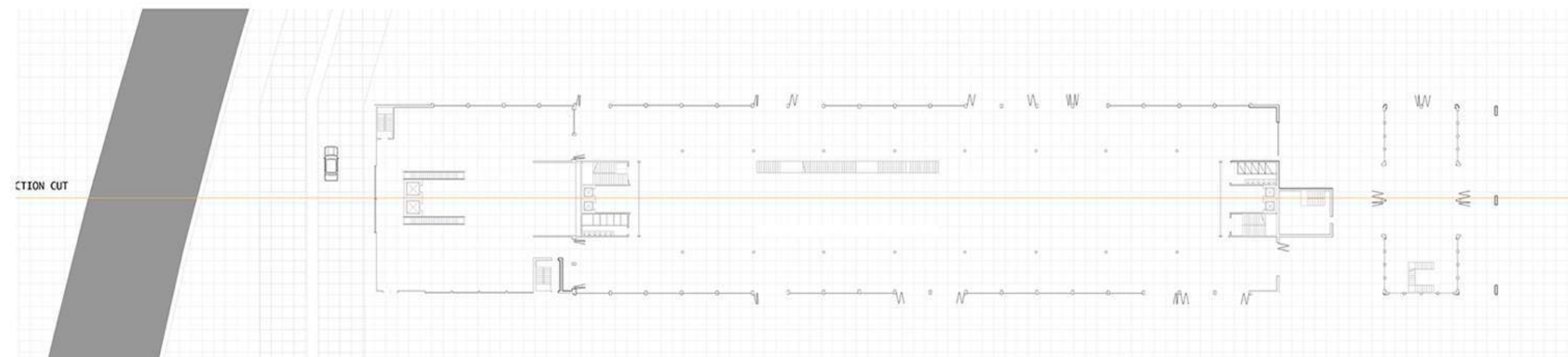
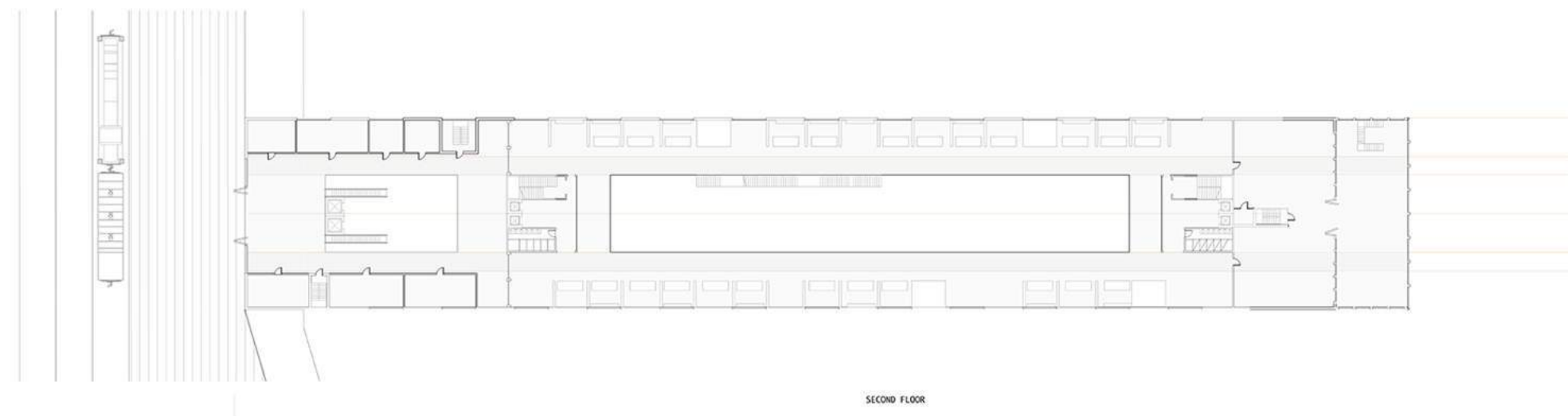




## Toronto Community Center, Boundaries and Thresholds

This community center attempted to integrate numerous community functions such as a train station and market hall. There is an emphasis on permeability through the first floor as it connects a residential space and community plaza with each other.

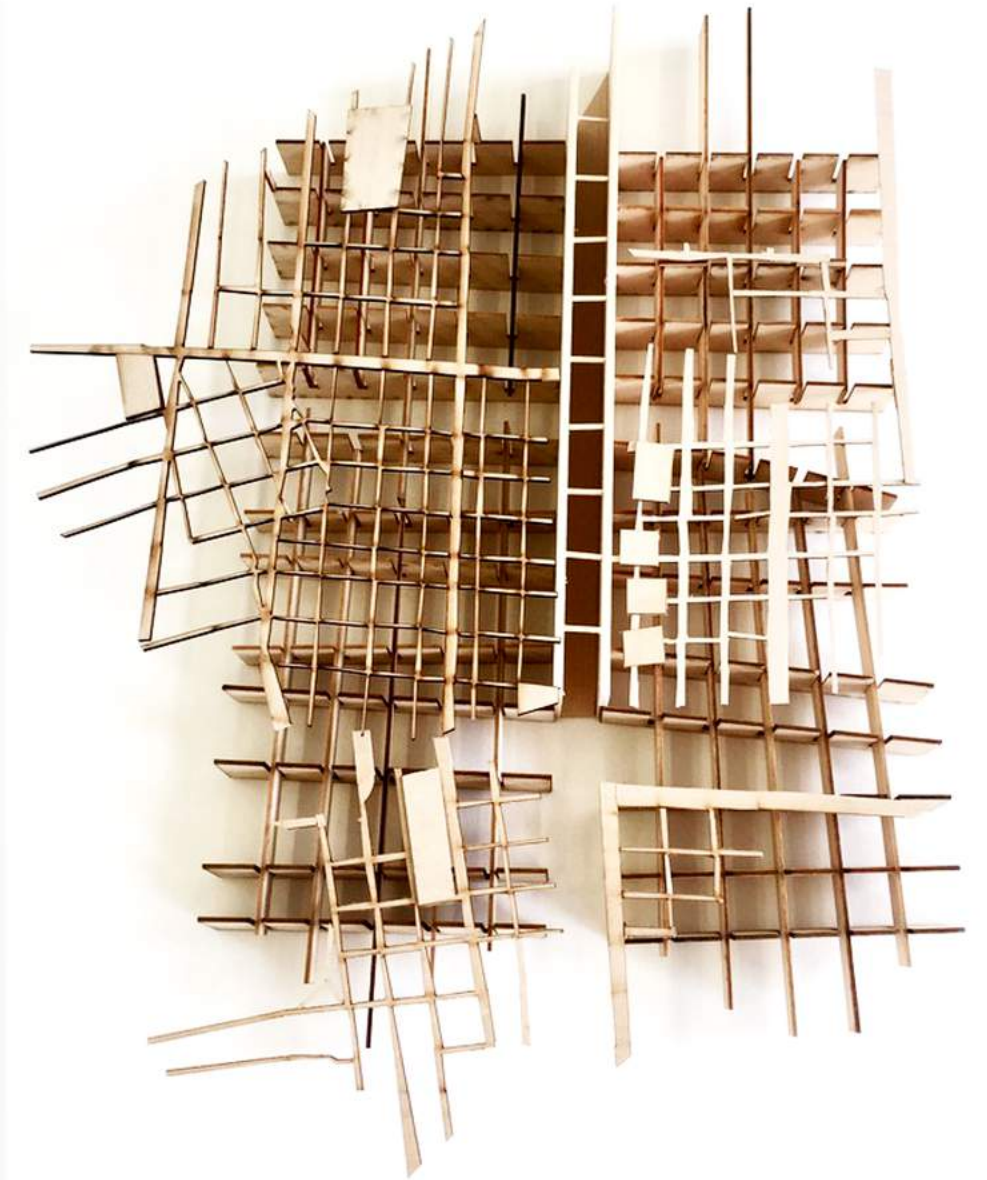
Furthermore, the extension of the building to hover above the train tracks allows for a sheltered experience on the platform and a unique view when above the tracks.



# Analysis of the Lafitte Greenway

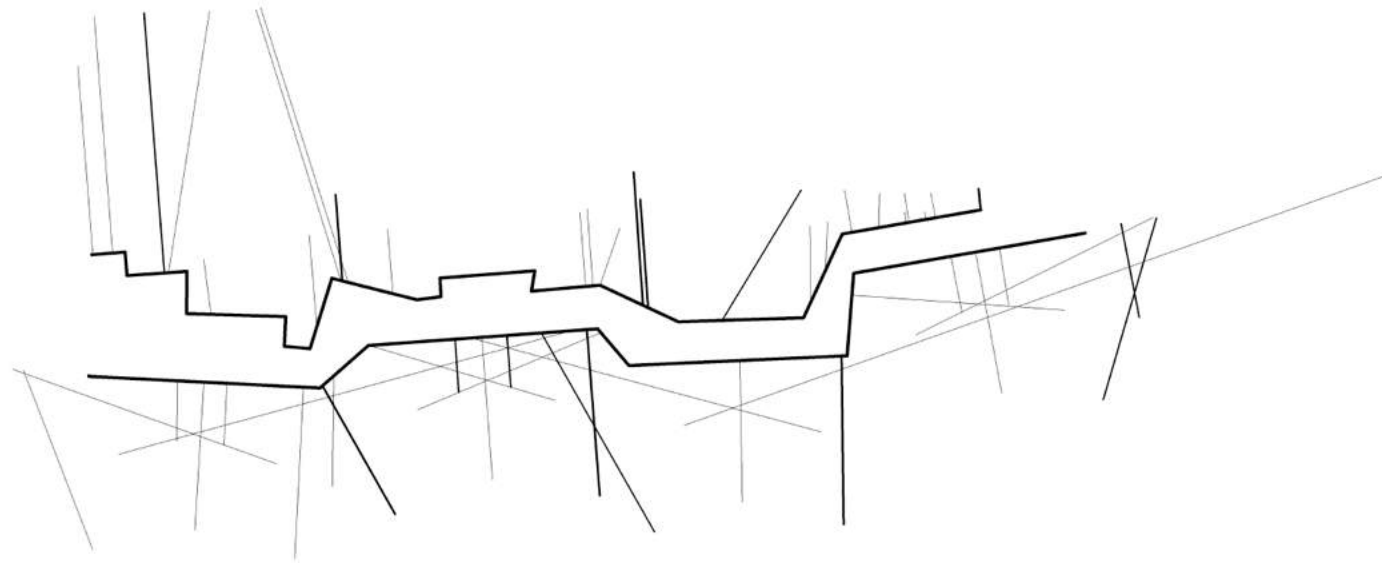
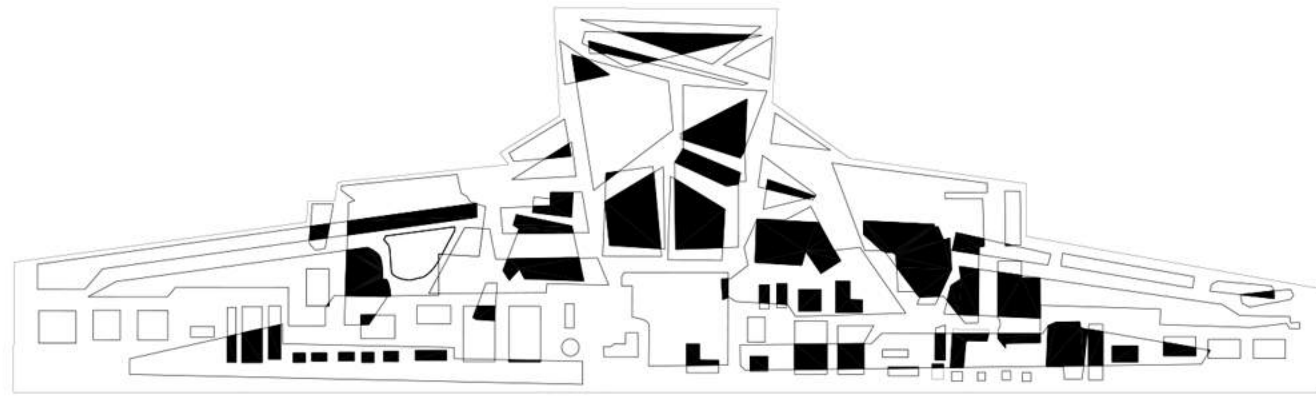


The Lafitte Greenway was once an old canal and shipping center that became a scar across the city of New Orleans. These projects are syntheses analyzing the elements that constitute the space. The collection of natural topography, infrastructure and history culminate to develop a cohesive understanding of the the Lafitte Greenway and its former canal.



# Precedent Research of Strawberry Vale Elementary School Victoria, BC

The analysis of Strawberry Vale was done in preparation of an elementary school design. The circulation, interaction with nature, and division of the spaces remained important considerations and useful factors to employ.



# Gansu, China



GANSU, CHINA



GANSU, CHINA



GANSU, CHINA

Exploration of 3d maps via the overlay of historic maps and GIS data. The maps are a rendering of the Gansu Mountains and the Yellow River.